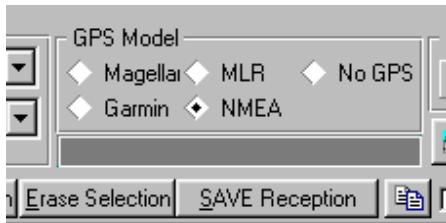


WDGPS

WDGPS Mini How-To.
Juillet 2001. Bruno.

There is Three ways to use WDGPS:

- With No GPS.
- In NMEA Mode With or without GPS connected.
- With GPS connected to download/Upload data.



Choose your working mode in the 'GPS Model' Check Box.

IMPORTANT:

WDGPS ALWAYS need/produce PCX5 files or NMEA to be used.

The 'reception' area is only to show the data from the GPS.

The button 'Save reception' is only to save the yellow window content in a text file.

This text file CAN'T be used to calculate later with WDGPS, WDGPS need always PCX5, DXF etc.. and NEVER text files from the reception window!

Working in 'No GPS' mode:

This mode is used to files conversions.

Working in 'NMEA Mode' Connected to the GPS:

- If you don't connect the GPS, this mode is used to 'Import NMEA' files
- If you connect a GPS, it's to Capture in real time the NMEA data from the GPS, show and save these data in a NMEA file to use later.
- In this mode you can ONLY recieve NMEA data FROM the GPS Unit. You can't

send or upload data!

- Remember to configure the GPS unit in the NMEA mode.
- Set the serial parameters and 'connect' the GPS Unit



- The NMEA sequences will be displayed and can be saved with the 'File,NMEA Export'
- You can visualize (In real time) with the button:



even if the WDGPS is receiving NMEA data!

- In the 'Visualization Window', you must click the 'Calculate' button to see the graphic.
- When the graphic is calculated, You can save this track in a PCX5 Track file with the 'File, Save to PCX5 Track' menu option

Working in 'NMEA Mode' NOT Connected:

- You can Import NMEA file and visualize the capture with the button:



- In the 'Visualization Window', you must click the 'Calculate' button to see the graphic.
- When the graphic is calculated, You can save this track in a PCX5 Track file with the 'File, Save to PCX5 Track' menu option.
- In this mode too, you can use the 'Conversions' menu option if you need to convert files.

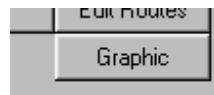
Working with 'GPS' (Magellan, Garmin, MLR):

- This mode is used to Upload/Download data from/to the GPS unit.
- In this mode you can ONLY Upload/Download data from/to the GPS Unit. There is no NMEA provided by the GPS.
- **Remember to configure the GPS unit in the 'normal' mode or 'NO NMEA' mode.**
- Use 'Garmin' Protocol with the Garmin GPS Units, Uncheck NMEA mode with the Magellan GPS Units.
- Click the 'Connec. GPS' button and use the Waypoints/Tracks etc... buttons in the main Window.

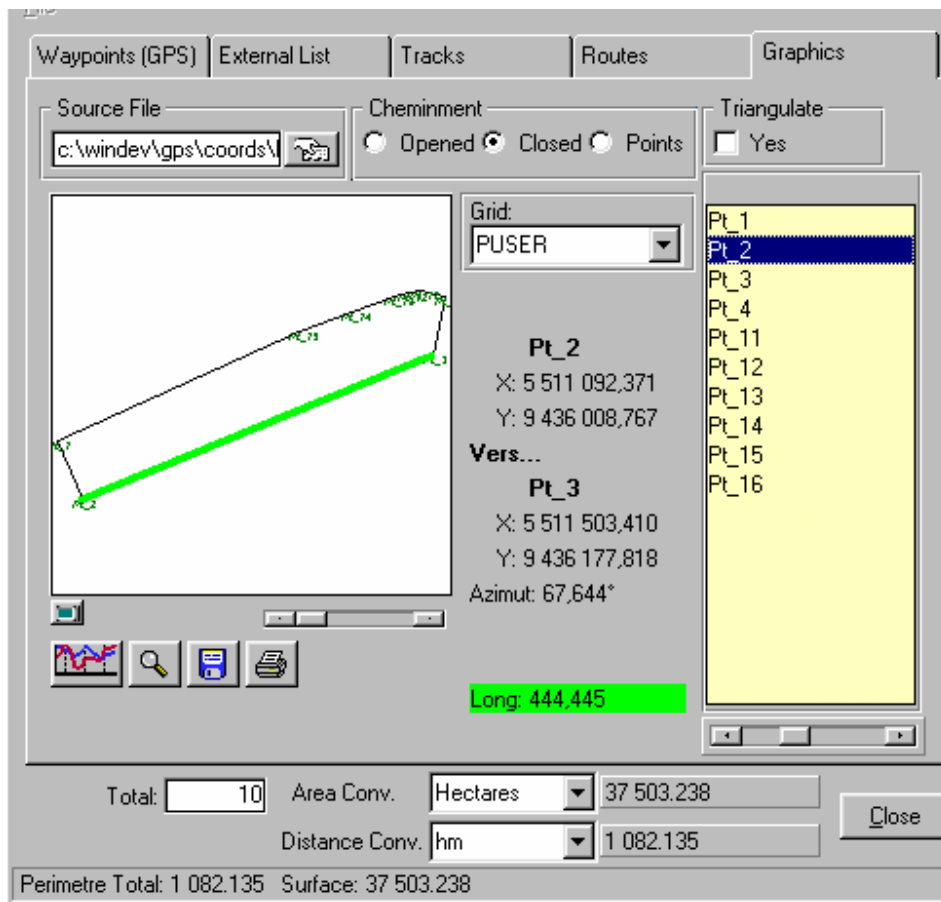


Calculate lengths and areas from files:

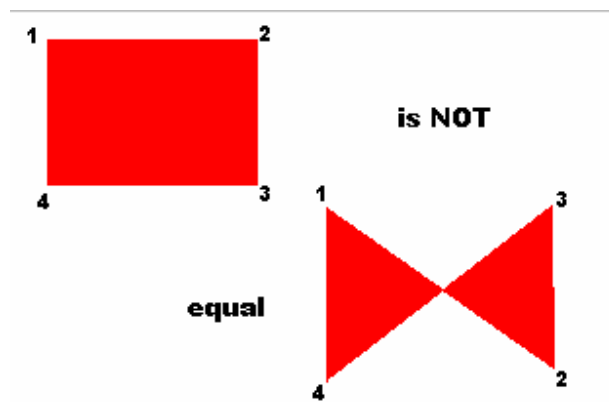
- To calculate we must ALWAYS have PCX5, DXF etc.. files.
- From the main window, click the graphic button:



- Choose your user grid
- The grid is important to have good distances depend your geographic position use PUSER to your location. The PUSER projection is used to convert Lat/Lon positions in a user grid in X,Y in meters.
- Select you file to calculate.
these files can be a: Tracks, Waypoints, DXF,Lambert (user grid), Geoconcept.



- By default the length is displayed, you must enable 'Cheminment, Closed' to display areas.
- If you choose point in the points liste, you display the lengths between points. The lengths distances are in METERS
- **IMPORTANT:** The cheminment points MUST be clockwise or no-clockwise to calculate areas but not mixed!! because:



To be continued ;-))

Bruno. 20 July 2001